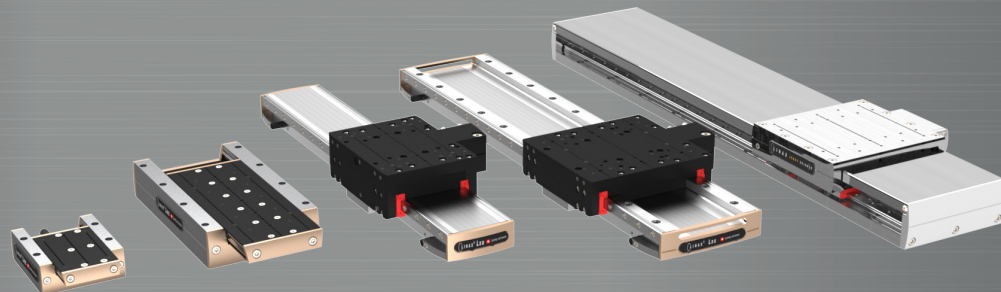


LINAX®	Running Accuracy EYX	Roll QX	Pitch QY	Yaw QZ
Lxc 44F08	$\pm 5\mu\text{m}$	$\pm 15\text{ws}$	$\pm 30\text{ws}$	$\pm 20\text{ws}$
Lxc 85F10	$\pm 7\mu\text{m}$	$\pm 20\text{ws}$	$\pm 35\text{ws}$	$\pm 25\text{ws}$
Lxc135F10	$\pm 10\mu\text{m}$	$\pm 20\text{ws}$	$\pm 40\text{ws}$	$\pm 30\text{ws}$
Lxc 230F10	$\pm 12\mu\text{m}$	$\pm 20\text{ws}$	$\pm 50\text{ws}$	$\pm 35\text{ws}$
Lxc 80F40	$\pm 8\mu\text{m}$	$\pm 20\text{ws}$	$\pm 30\text{ws}$	$\pm 30\text{ws}$
Lxc 176F40	$\pm 10\mu\text{m}$	$\pm 20\text{ws}$	$\pm 35\text{ws}$	$\pm 35\text{ws}$
Lxc 272F40	$\pm 12\mu\text{m}$	$\pm 20\text{ws}$	$\pm 40\text{ws}$	$\pm 40\text{ws}$



1

Higher precision & closer tolerances

Based on improvements in materials, guidance elements and settings, we could enhance the tolerance up to factor of 3. The axes can be measured completely with laser interferometers and coordinate measuring machine.

2

New color

Our LINAX® Linear Motor Axes differentiate with a new color from their previous ones regarding precision & tolerances. Every model below will be delivered from now on with the black slider and the bronze-colored forehead cover:

Lxc 44F04, 44F08, 85F10, 135F10, 230F10
 Lxc 80F40, 176F40, 272F40
 Lxu 40F60, 80F60, 160F60, 240F60, 320F60
 Lxs 160F60, 200F60, 320F60, 400F60, 520F60,
 600F60, 800F60, 1000F60, 1200F60, 1600F60